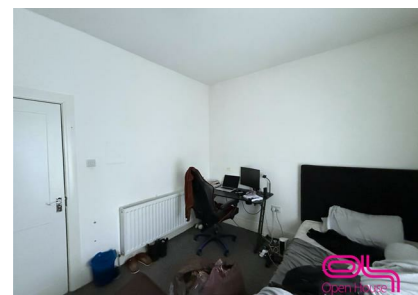


Room 2, Jethro Street, Bolton, BL2 2PU

£480 Per Month

Council Tax Band: A



Room 2 is a well-sized bedroom. The room offers comfortable and practical accommodation suitable for a single occupant, with access to shared kitchen and bathroom facilities within the house. The property provides convenient communal living in a well-connected residential area.

Key Features:

Room 2 is a well-sized bedroom suitable for single occupancy, with access to shared kitchen and bathroom facilities within a managed property.

Location Highlights:

Situated on Jethro Street in Bolton, close to local shops and supermarkets, conveniently positioned for Bolton town centre with good public transport links and easy access to surrounding commuter routes.



404 Derby Street, Bolton, BL3 6LS
 01204 589600
 bolton@localagent.co.uk
 www.openhousebolton.co.uk



Energy Efficiency Rating		
	Current	Potential
Very energy efficient - lower running costs		
(92 plus) A		
(81-91) B		
(69-80) C		
(55-68) D		
(39-54) E	44	
(21-38) F		
(1-20) G		
Not energy efficient - higher running costs		
England & Wales	EU Directive 2002/91/EC	